



YOUR COMPLETE FESTIVAL VENUE HIRE

We can offer you

- Big Top Festival tent, 10.5 High 28 meters by 20 meter with a 300 to 400 person capacity- (See specs below)
- Tiered Seating (three tier wooden bench seating that can hold 220 people)
- Supertrack system (plastic temporary walkway/ground covering providing a hardstanding system for grass areas. Suitable for light vehicle access. 450 m2 available.)

- Stage (6m x 6m and 50cm high) with backdrop, blackout trims and curtains.
- PA system (2.5K active speakers with bass bins with 12 channel mixing desk, 2 radio mics)
- Lighting (2xQA12X ; 10xQA5; FS600 LEDs, 8 x birdies; 40m external festooning; 70m internal festooning (acting as house lights) 4 moving heads lights. 8 white LED flood 2 are use as workers. Light run from a laptop (not provided) or light desk QTX light DM-x18.
- Aerial truss (7.5m to rigging points)

Technical Requirements

Space required: Height: 10.5m Width: 39 m Length: 32 m

Actual size of tent: Height outside: 10.5m Height inside: 8m
Height to rigging bar: 7.5m, Width: 26 m Length: 16m

Surface: On grass, flat with minimal incline. Please inform us of any underground pipes or cables. The big top can be built on a hard standing surface and weighted with ballast. Site visits will be undertaken with the tent boss and production manager prior to on site arrival.

Build time for Big Top: 7 hours **De-rig time:** 5 hours **Build time for inside production:** 7 hours **De-rig time:** 3 hours

These times are approximate as weather and site conditions can have an effect on build/de-rig time on the day.

Crew: 5 experienced crew required for the build and de-rig, preferably with prior event crew experience. Crew must be appropriately dressed e.g. work clothing, steel toe cap boots, gloves, waterproofs etc. PPE Inc. Hardhats and high visibility vests will be provided by Jossers. Jossers can provide/source crew for an additional fee.

Vehicular Access: continual access to the site for a 22 tonne vehicle during the build and de-rig. **Forklift:** a forklift and licenced driver needs to be supplied by the event organiser.

Security: 24h security to be arranged by the event organiser.

Power: 80kva generator with distro needed for use of PA, LX.

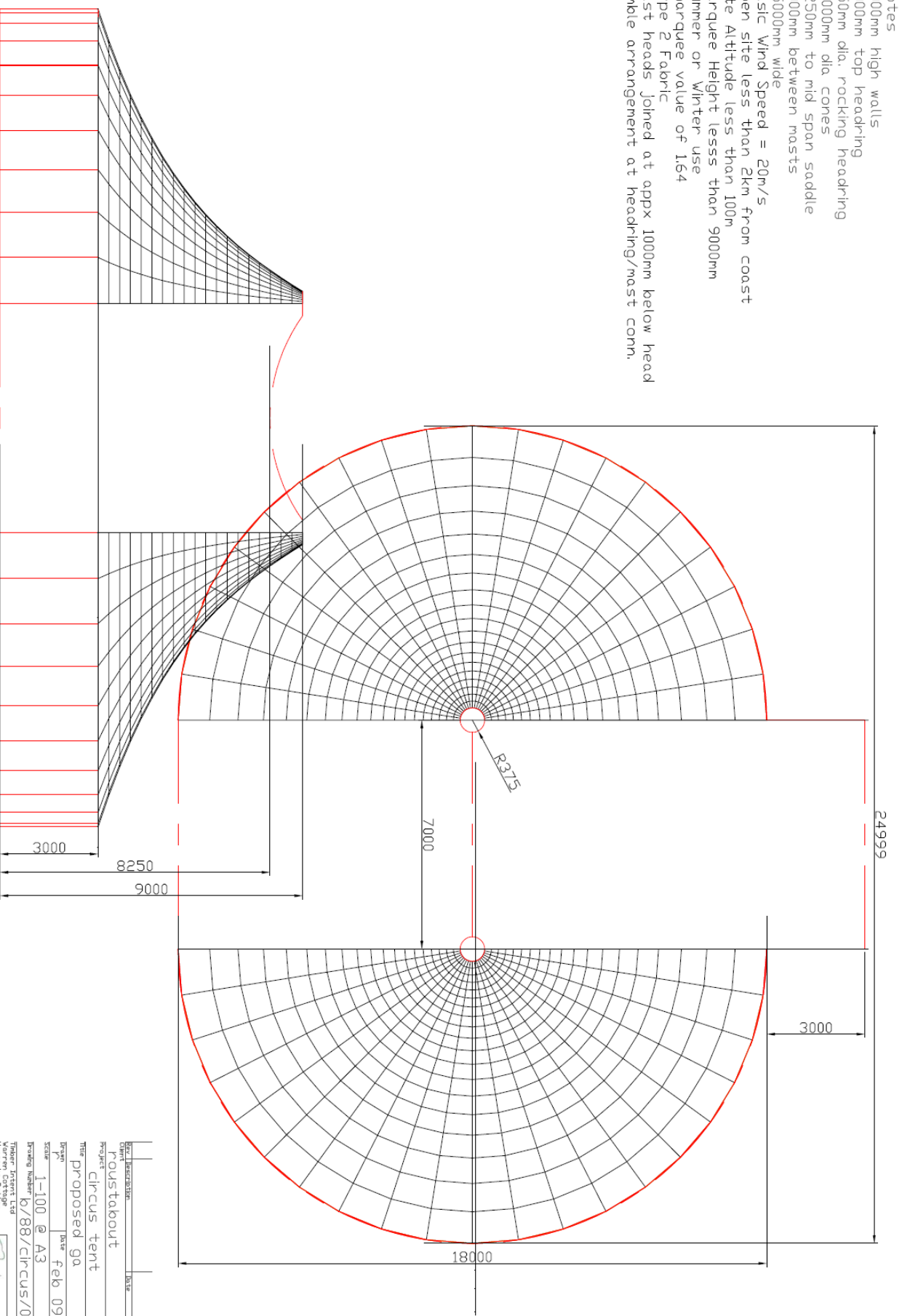
Jossers Big top hold employers, product and public liability insurance which is available on file. Health and safety policies, method statements, risk assessments, wind loading calculations and structural engineers reports are available on request.

Past clients have included:

- Belfast Festival at Queens
- Circus festival, The Roundhouse, London
- Circus in a field, Let's Circus, Newcastle upon Tyne
- Swell Festival, Aran Island
- Earagail Arts Festival, Letterkenny, Co. Donegal
- Carnivale of Colours, Derry~Londonderry, City of Culture



- Notes
- 3000mm high walls
 - 9000mm top headinging
 - 750mm dia. rocking headinging
 - 18000mm dia. cones
 - 8250mm to mid span saddle
 - 7000mm between masts
 - 25000mm wide
 - Basic Wind Speed = 20m/s
 - Open site less than 2km from coast
 - Site Altitude less than 100m
 - Marquee Height less than 9000mm
 - Summer or Winter use
 - Marquee value of 164
 - Type 2 Fabric
 - Mast heads joined at appx 1000mm below head
 - Gimble arrangement at headinging/mast conn.



DATE	DESCRIPTION	BY
	Final	
Project		
Poustabout		
Project		
Clircus tent		
Title		
Proposed ga		
Drawn	Date	
1-100	Feb 09	
Scale		
1-100 @ A3		
Drawing Number		
R/88/clircus/01		
Prepared by		
Thierry Jansart Ltd		
Harcourt Station		
Lyon Stgls		
Tel/Fax 01297344415		
Email thj@thjengineering.co.uk		



